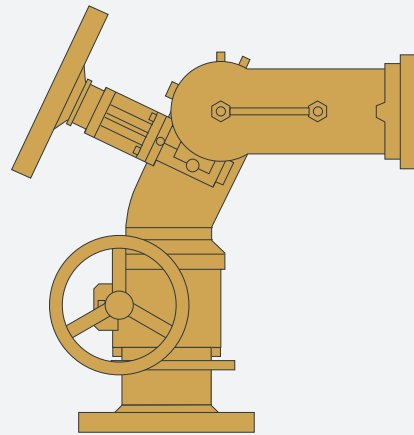


# Titan GMB85

**Bronze Fire Monitor Nominal flow  
8,500 l/min**

- Simple and reliable design
- Low maintenance
- Most models available with lever or gearbox control
- Suitable for use where explosive atmospheres may be present



The Angus GMB85 bronze fire monitor is a simple and reliable design with non-reversible worm and wheel gearbox control in both the horizontal and vertical plane. Movement can be by hand wheels or chain wheels.

Computer designed guide vanes cast into the body reduce turbulence and spin in the water stream lowering pressure loss and improving jet reach. All Angus bronze monitors are based on a proven low maintenance design.

### Body materials

Bronze body to EN CC491K, equivalent to LG2, Red Brass, ASTM B62 and UNI 7013-8

Copper	Zinc	Lead	Tin
85%	5%	5%	5%

Material certification to EN 10204 3.1 is available on request.

### Bearing materials

Stainless steel (SS316) double ball race bearings on both axis with Viton seals rated up to 120°C

### Gearbox specification

Worm and shaft material: stainless steel SS316

Wheel material: bronze as monitor body

Worm bearings: twin ball race

Hand wheels: Duraplast

Chain drive available (CGMB65)

### Inlet connection

Standard flange 6" ANSI 150 FF (150-250 AARH)

(DIN and non standard flange options available)

### Outlet connection

150 x 150 square flange

### Design pressure

Maximum working pressure 16 bar  
Hydraulic factory test pressure 24 bar

### Performance

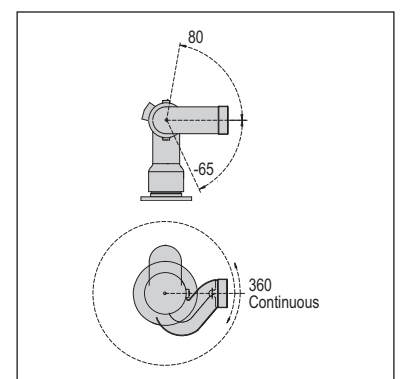
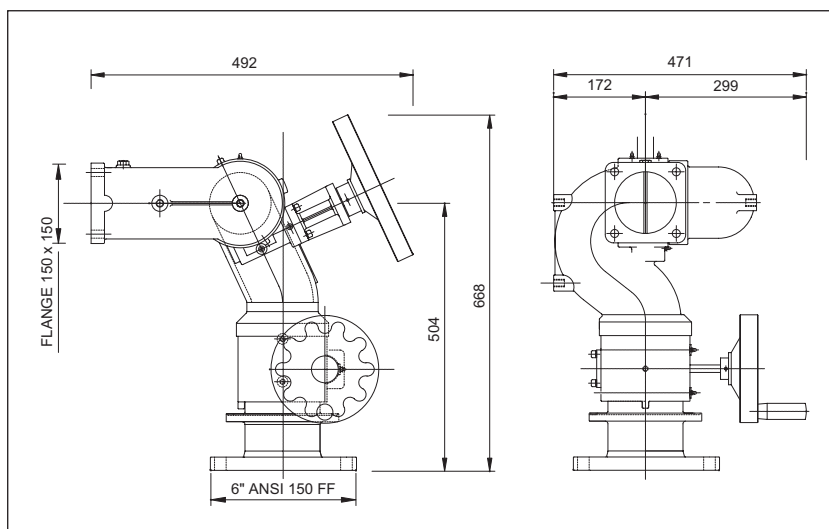
Pressure loss at 8,500 l/min 3.8 bar.  
(For pressure losses at other flow rates refer to the pressure loss graph.)

### Weight

76 kg

### Movement

360° continuous rotation in the horizontal plane  
+80° / -65° movement in the vertical plane

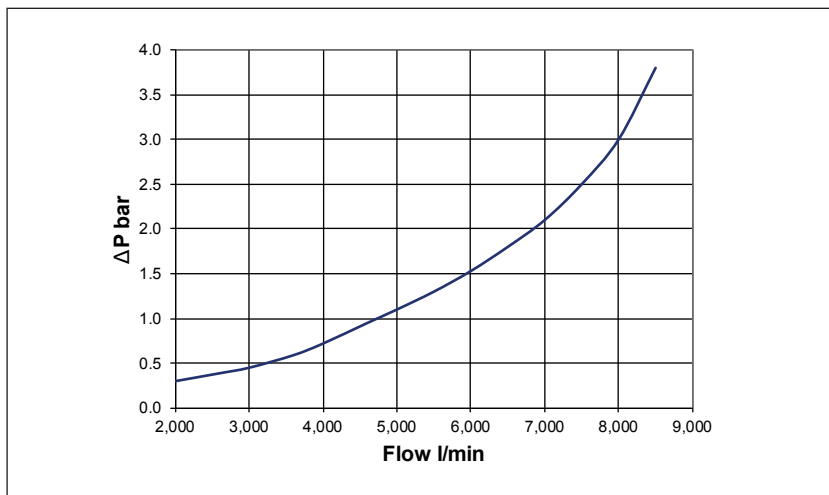


# Titan GMB85

**Bronze Fire Monitor Nominal flow 8,500 l/min**

## Optional Paint Finish

Surface preparation	Solvent cleaning
Primer coat	Epoxy 30µm
Intermediate coat	Epoxy grey 40µm
Finish coat	Polyurethane 40µm Red RAL3000
Total dry film thickness	110µm



## Length and height of monitor water jet

FJ8500 nozzle at 11 bar monitor inlet pressure:

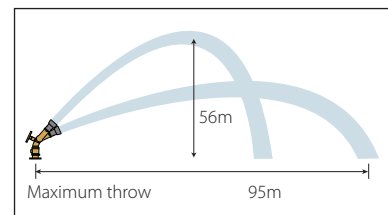
Flow 8410 l/min

Maximum jet throw at 32°, 95m

Maximum jet height at 75°, 56m

*Note: The jet throw depends on a number of variables such as wind direction, type and concentration of foam and the condition of the monitor water ways and nozzle.*

*For throw and height calculations at different inlet pressures and flows and for different nozzles and angles refer to the Angus interactive electronic data sheet.*



## Outlet nozzle options

Bronze bodies, manual controlled, fog/jet nozzles with shut off:

FJ20: 2000 l/min

Bronze bodies, manual controlled, fog/jet nozzles:

FJ 1300 to 8500 l/min

Stainless steel barrel with bronze base, aspirating foam cannons:

FC 800 to 9000 l/min

Stainless steel water jet pipes:

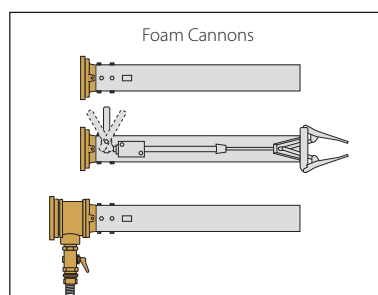
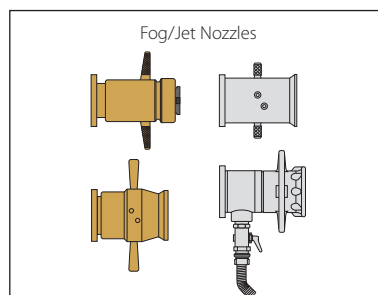
WC 1500 and 3000 l/min

A range of dry powder nozzles is also available – refer to Angus Fire

All foam cannons come with the option of a manually operated spreader.

All nozzles and branchpipes come with the option of a self inducing foam connection.

(For technical details of nozzles and branchpipes see separate data sheets.)



The Angus monitor range includes bronze models up to 8,500 l/min and stainless steel models up to 50,000 l/min.

Most models are available with lever or gearbox control, automatic oscillation or with hydraulic or electric remote control. All are suitable for use where explosive atmospheres may be present.

Angus is a company assessed to ISO 9001:2008

## INTERNATIONAL SALES

### Angus Fire Ltd

Angus House, Haddenham Business Park,  
Pegasus Way, Haddenham, Aylesbury, HP17 8LB, UK  
Tel: +44 (0)1844 293600 • Fax: +44 (0)1844 293664

## UK SALES

### Angus Fire Ltd

Station Road, Bentham, Lancaster, LA2 7NA, UK  
Tel: +44 (0)1524 264000 • Fax: +44 (0)1524 264180

Angus Fire operates a continuous programme of product development. The right is therefore reserved to modify any specification without prior notice and Angus Fire should be contacted to ensure that the current issues of all technical data sheets are used.